

Nordic Countries

Prices valid from 01.01.2017

# PRICE CATALOGUE 2017



Research  
models



Laboratory  
services



Transgenic  
services

**JANVIER.**  
Rodent research models  
& associated services **LABS**

[www.janvier-labs.com](http://www.janvier-labs.com)

contact@janvier-labs.com - T. +33 (0)2 43 02 11 91 - F. +33 (0)2 43 02 00 15

# CONTENTS



The partner you can rely on .....	04
<b>Transport and packaging</b> .....	<b>06</b>
<b>Research Models</b>	
<b>Rats</b> .....	<b>07 - 09</b>
Outbred	
Inbred	
Mutant	
<b>Aged animals</b> .....	<b>10</b>
<b>Mice</b> .....	<b>10 - 18</b>
Inbred	
Mutant	
Hybrid	
Outbred	
<b>Other rodents</b> .....	<b>18</b>
<b>Transgenic services</b> .....	<b>19 - 21</b>
<b>Laboratory services</b> .....	<b>22 - 23</b>



Research  
models



Laboratory  
services



Transgenic  
services

**An ex-breeder** is an animal originating from uncoupled animals at the end of the cycle.  
**A reformed animal** is an animal which is sold without age or weight criteria, subject to availability.

**Gerontology:** for the ageing of inbred or outbred old breeders, please contact us.

**The delivered pregnant females** are primiparous. Each ordered pregnant female will be invoiced.  
To guarantee the availability of pregnant females, we recommend you anticipate your programmed coupling requests.

**The weight of the animal mentioned on the order form** corresponds to the weight on shipment day from JANVIER LABS.

General terms and conditions for Sales and the Provision of Services can be found on our website [www.janvier-labs.com](http://www.janvier-labs.com)

Do you remember in 2013 when we told you about our name change from JANVIER to JANVIER LABS?

Well, on top of the new name and logo, I wanted to share my plans with you. Indeed, I am taking JANVIER LABS to a new and ambitious dimension where the key words are "Excellence" and "Highly Secured Health Processes". We are investing in our future to give you satisfaction by delivering the best possible health standards that can be found in Europe and this will make JANVIER LABS a European reference.

JANVIER LABS: It's the story that began with a mouse and developed into a family-run company with strong values. That was in France in 1960 ... half a century ago already. It's from those same genes that our vision, ambition and strategy were born.

Our customers are at the centre of our work. JANVIER LABS is a company that listens to its customers. You are the ones who lead us on our quest for excellence: excellence in health standards, excellence in quality, excellence in customer satisfaction.

As a partner of your day-to-day business, JANVIER LABS is able to provide you with a fully reliable and stable experimental environment to support and facilitate your research work.

We have a deep respect for the work you do. This respect is illustrated in each gesture of our procedures. At JANVIER LABS, our ethical attitude begins where our story first began, in our breeding activity.

A company with cutting-edge innovation means a company that is agile and reactive. JANVIER LABS puts all its energy into bringing you constantly updated and exceptionally high quality services.

All of this is possible thanks to our committed employees, forming conscientious teams and working with professionalism and precision to answer our customers' needs in the understanding that excellence in health and safety is a team objective.

All of these examples illustrate that over and above a change of name, JANVIER LABS is in a perpetual state of development with the most advanced equipment, constantly improved processes and the level of its health and safety standards, whilst attracting the best talents.

JANVIER LABS has fulfilled its commitments by investing today for its future and for tomorrow's research. We have made no short-cuts on quality or security, with the aim to serve and satisfy you.

*Eliane Janvier*  
Chairwoman

*Dr. Robert Fildan*  
General Director



# THE PARTNER YOU CAN RELY ON

## Our commitments

### Adaptability and reactivity

- Flexibility in order-taking
- Tailor-made response to each of your requirements
- Personalised accompaniment for your projects

## Guaranteed availability

### Your models always in stock

- Each strain is bred in several production units
- Production capacity: 3 million rodents annually



## Analyses carried out externally

### Unbiased data for your research

- Objectivity and neutrality: health checks and analyses outsourced to independent laboratories
- Reliability of analysis techniques

## Animal wellbeing

### It's in our genes

- Optimal transport conditions for animal welfare
- Rodent socialisation
- Highly qualified personnel



## Calm and docile models

### Easy handling

- Handled by human hands
- Small production units for less noise
- No cohabitation of species

## In-house transport

### We guarantee what is under our control

- Qualified drivers trained by Janvier Labs
- Ventilated and air-conditioned lorries
- Approved vehicles

## Your satisfaction: our priority

- Sales assistance on hand and ready to help
- Local sales representative for your specific needs
- Team of Veterinary surgeons and Doctors to advise you
- An ISO 9001 certified company for all our activities



# THE PARTNER YOU CAN RELY ON

***A company of reference is a company that keeps its promises.***

***Over the past 3 years, JANVIER LABS has consulted experts and made huge investments to build a state of the art technological and highly performing operating system with ultra multi-layered security, because "excellence in health processes" means "no compromise".***



**Doubling the surface area of the existing JANVIER LABS site!**

Our new production units are equipped with the latest and most advanced innovations in terms of security, automated procedures, optimal work stations and health considerations, naturally.

The production environment is strictly controlled within extremely stringent health procedures with many points of control, autoclaving and decontamination.

## The heart of our business

### Breeding rodent models

Genetic stability, very high health quality

### Provision of associated services

Cryopreservation, assisted reproduction, customised breeding, model preparation laboratory





## Weekly deliveries to the nordic countries

City / Country	Day of delivery	Price in Euros
Denmark	Wednesday	On request
South and East of Sweden	Wednesday	
West of Sweden (Göteborg area)	Thursday	
Norway	Thursday	
Finland	Thursday	

### Flexibility, reactivity and reliability!

Place your orders up to noon on Mondays the week of delivery.

Please note: our deliveries could be modified in weeks with public holidays:

Week 16	Monday 17 <sup>th</sup> April – Easter
Week 18	Monday 1 <sup>st</sup> May – Labour Day
Week 19	Monday 8 <sup>th</sup> May – 1945 Armistice
Week 21	Thursday 25 <sup>th</sup> May – Ascension
Week 23	Monday 5 <sup>th</sup> June – Whitsuntide
Week 28	Friday 14 <sup>th</sup> July – National Day
Week 33	Tuesday 15 <sup>th</sup> August – Assumption Day
Week 44	Wednesday 1 <sup>st</sup> November - All Saint's Day
Week 52	Monday 25 <sup>th</sup> December – Christmas Day

## Packaging adapted to animal's health status

Packaging (measurements)	Price in Euros
Filterless packaging - small model (420 x 305 x 150 mm)	On request
Filterless packaging - large model (580 x 435 x 150 mm)	
Filter packaging - small model (420 x 305 x 150 mm)	
Filter packaging - large model (580 x 435 x 150 mm)	
Facilitypack® : packaging for immunodeficient rodents and with SOPF health status (480 x 355 x 185 mm)	
Easypack : IATA-certified packaging - small model (454 x 289 x 190 mm)	
Easypack : IATA-certified packaging - large model (578 x 445 x 230 mm)	
Packaging for catheterised animals	
Dry ice packaging - large and small model	
Refreeze packaging	
<b>Transport gel</b>	
Gelatine block - in bag (sold separately)	

### Transport gel provided free

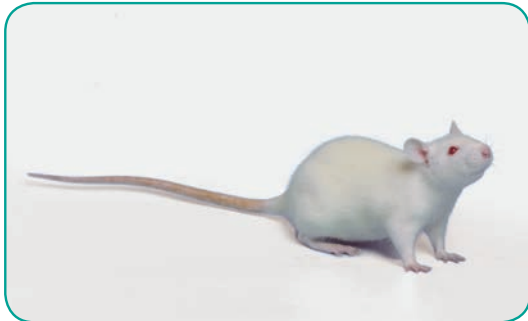
All of our packaging contains a drink substitute to rehydrate the animals during transit. This product guarantees the preservation of the SOPF and SPF status.

Facilitypack® is a registered trademark of JANVIER LABS. All rights reserved.

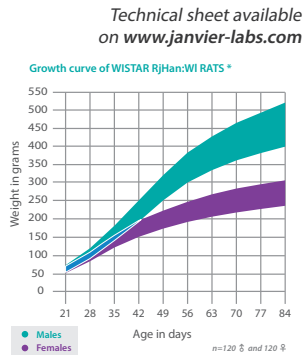


# RESEARCH MODELS

## WISTAR RjHan:WI



### Outbred rat

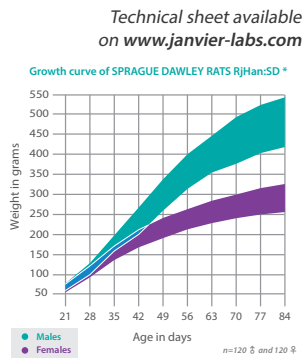


Weight (in grams)	Price in Euros	
	MALE	FEMALE
Up to 49	8,88	8,88
50 to 74	10,00	9,72
75 to 99	11,70	10,69
100 to 124	12,18	11,30
125 to 149	12,63	12,61
150 to 174	14,45	14,74
175 to 199	15,95	16,17
200 to 224	16,74	17,28
225 to 249	17,27	18,82
250 to 274	18,83	
275 to 299	20,49	
300 to 324	22,05	
325 to 349	25,15	
For each extra week		2,29
Time-mated pregnant female, guaranteed at E15 on delivery date		88,40
Not-guaranteed pregnant female		65,80
Female with litter (10-12 pups*)		92,27
Old breeders		8,88

## SPRAGUE DAWLEY® RjHan:SD (CD®)



### Outbred rat



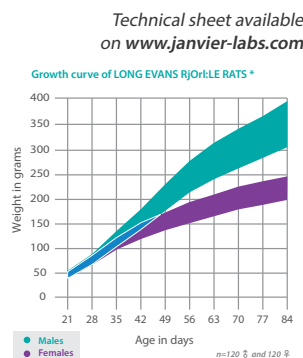
Weight (in grams)	Price in Euros	
	MALE	FEMALE
Up to 59	8,69	8,95
60 to 74	9,62	9,31
75 to 99	11,08	10,36
100 to 124	12,01	10,91
125 to 149	13,22	12,12
150 to 174	14,45	14,22
175 to 199	15,22	15,43
200 to 224	16,64	16,08
225 to 249	18,77	16,75
250 to 274	19,83	
275 to 299	21,20	
300 to 324	24,28	
325 to 349	25,66	
For each extra week		2,28
Time-mated pregnant female, guaranteed at E15 on delivery date		101,05
Not-guaranteed pregnant female		72,42
Female with litter (10-12 pups*)		103,62
Old breeders	8,69	8,95

SD® is a registered trademark of Envigo. All rights reserved.  
CD® is a registered trademark of Charles River. All rights reserved.

## LONG EVANS RjOr:LE



### Outbred rat



Weight (in grams)	Price in Euros	
	MALE	FEMALE
Up to 49	13,36	13,36
50 to 74	16,33	14,63
75 to 99	18,63	14,93
100 to 124	19,09	19,09
125 to 149	20,88	21,22
150 to 174	22,48	23,35
175 to 199	22,79	25,04
200 to 224	26,72	27,51
225 to 249	28,48	
250 to 274	30,99	
275 to 299	31,82	
300 to 324	35,84	
For each extra week		2,33
Time-mated pregnant female, guaranteed at E15 on delivery date		83,31
Not-guaranteed pregnant female		62,20
Female with litter (10-12 pups*)		79,60
Old breeders		13,36

\* as indicative basis.  
For animals with SOPF status; please contact us.



# RESEARCH MODELS

## DARK AGOUTI DA/HanRj

### Inbred rat

Age (in weeks)

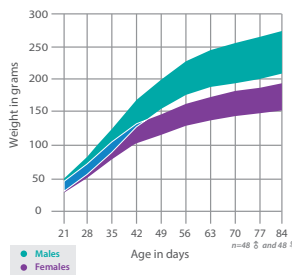
Price in Euros

MALE or FEMALE



Technical sheet available on [www.janvier-labs.com](http://www.janvier-labs.com)

Growth curve of DARK AGOUTI DA/HanRj RATS \*



3	40,35
4	44,23
5	49,38
6	55,16
7	62,19
8	69,22
9	75,93
For each extra week	4,74
Time-mated pregnant female, guaranteed at E16 on delivery date	133,76
Not-guaranteed pregnant female	120,98
Female with litter (5-7 pups*)	139,82
Old breeders	40,35

## LEWIS LEW/OriRj

### Inbred rat

Age (in weeks)

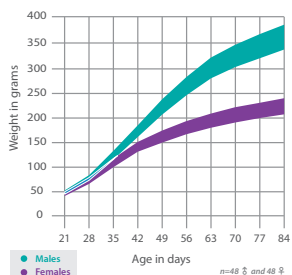
Price in Euros

MALE or FEMALE



Technical sheet available on [www.janvier-labs.com](http://www.janvier-labs.com)

Growth curve of LEWIS LEW/OriRj RATS \*



3	20,25
4	23,58
5	26,25
6	30,50
7	34,51
8	38,74
9	41,97
For each extra week	4,17
Time-mated pregnant female, guaranteed at E16 on delivery date	150,49
Not-guaranteed pregnant female	96,00
Female with litter (5-7 pups*)	146,50
Old breeders	20,25

## FISCHER F344/HanZtmRj

### Inbred rat

Age (in weeks)

Price in Euros

MALE or FEMALE



Technical sheet available on [www.janvier-labs.com](http://www.janvier-labs.com)

3	26,20
4	27,56
5	31,19
6	34,43
7	39,63
8	41,75
For each extra week	3,64



\* as indicative basis.  
For animals with SOPF status: please contact us.





# RESEARCH MODELS

## WISTAR KYOTO WKY/KyoRj

### Mutant rat

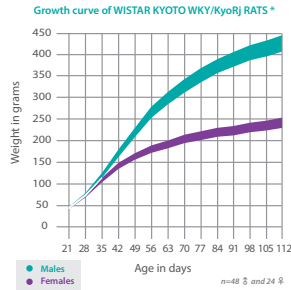
Age (in weeks)

Price in Euros

MALE



Technical sheet available on [www.janvier-labs.com](http://www.janvier-labs.com)



3	24,37
4	29,47
5	32,13
6	37,77
7	43,66
8	47,40
9	54,83
10	61,79
11	68,46
12	74,35
For each extra week	6,83
Old breeders	24,37

## SHR SHR/KyoRj

### Mutant rat

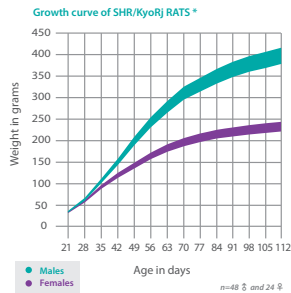
Age (in weeks)

Price in Euros

MALE



Technical sheet available on [www.janvier-labs.com](http://www.janvier-labs.com)



3	46,40
4	47,38
5	51,65
6	57,26
7	62,09
8	69,84
9	76,57
10	83,31
11	89,82
12	97,68
For each extra week	7,01
Old breeders	45,55

## FAWN HOODED Rjlbm:FH Outbred rat

Technical sheet available on [www.janvier-labs.com](http://www.janvier-labs.com)



## BROWN NORWAY BN/OrRj Inbred rat

Technical sheet available on [www.janvier-labs.com](http://www.janvier-labs.com)



## BLACK HOODED or PVG PVG/OrIRj Inbred rat

Technical sheet available on [www.janvier-labs.com](http://www.janvier-labs.com)



## SPRAGUE DAWLEY® Hairless Rj:SDH-Dsg4 Mutant rat

Technical sheet available on [www.janvier-labs.com](http://www.janvier-labs.com)



## LOU-nu Lou/MRj-Foxn1<sup>nu</sup> Mutant rat

Technical sheet available on [www.janvier-labs.com](http://www.janvier-labs.com)



SPRAGUE DAWLEY® is a registered trademark of Envigo. All rights reserved.



## Aged animals

### Aged Wistar RjHan:WI (Gerontology)



Technical sheet available on [www.janvier-labs.com](http://www.janvier-labs.com)

Age (in months)	Price in Euros	Age (in months)	Price in Euros	Age (in months)	Price in Euros
	MALE		MALE		MALE
4	55,64	9	139,31	14	250,41
5	71,13	10	158,30	15	277,12
6	86,61	11	177,42	16	305,40
7	101,25	12	196,40	17	326,09
8	120,31	13	223,33	18	343,99

For rats older than 18 months, please contact us.

### Aged C57BL/6JRj (Gerontology)



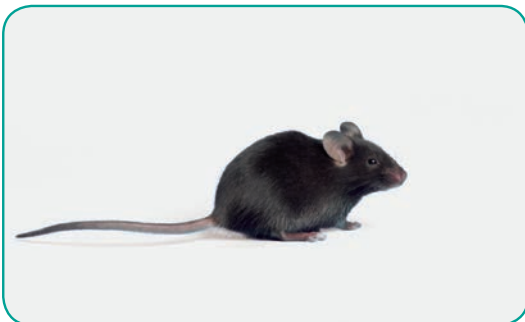
Technical sheet available on [www.janvier-labs.com](http://www.janvier-labs.com)

Age (in months)	Price in Euros	Age (in months)	Price in Euros	Age (in months)	Price in Euros
	MALE		MALE		MALE
4	46,14	9	90,16	14	132,47
5	54,37	10	98,07	15	141,67
6	65,01	11	105,99	16	150,86
7	74,33	12	113,91	17	160,06
8	82,24	13	123,28	18	169,26

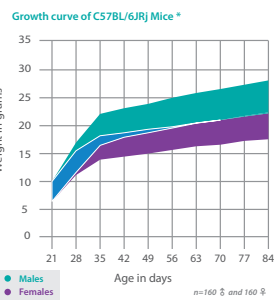
For mice older than 18 months, please contact us.

### C57BL/6JRj

### Inbred mouse



Technical sheet available on [www.janvier-labs.com](http://www.janvier-labs.com)



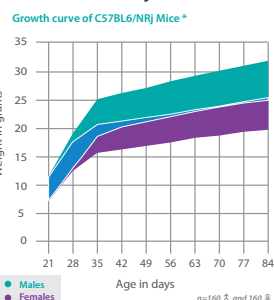
Age (in weeks)	Price in Euros
	MALE or FEMALE
3	13,15
4	13,99
5	15,26
6	15,59
7	15,82
8	16,22
9	16,47
10	18,37
11	20,47
For each extra week	2,22
Time-mated pregnant female, guaranteed at E16 on delivery date	92,95
Not-guaranteed pregnant female	69,83
Female with litter (5-6 pups*)	95,41
Old breeders	12,88

### C57BL/6NRj

### Inbred mouse



Technical sheet available on [www.janvier-labs.com](http://www.janvier-labs.com)



Age (in weeks)	Price in Euros
	MALE or FEMALE
3	12,10
4	13,15
5	14,46
6	15,22
7	15,78
8	16,27
For each extra week	2,20
Time-mated pregnant female, guaranteed at E16 on delivery date	94,72
Not-guaranteed pregnant female	69,88
Female with litter (5-6 pups*)	95,72
Old breeders	12,70



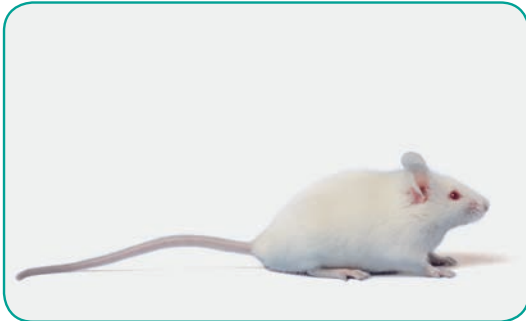
# RESEARCH MODELS

## BALB/cByJRj

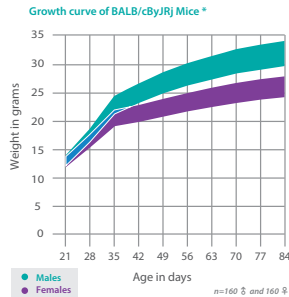
### Inbred mouse

Age (in weeks)

Price in Euros  
MALE or FEMALE



Technical sheet available  
on [www.janvier-labs.com](http://www.janvier-labs.com)



3	13,30
4	13,98
5	15,12
6	16,79
7	18,30
8	19,83
For each extra week	2,57
Time-mated pregnant female, guaranteed at E16 on delivery date	171,36
Not-guaranteed pregnant female	88,38
Female with litter (5-6 pups*)	156,10
Old breeders	12,08

## BALB/cAnNRj

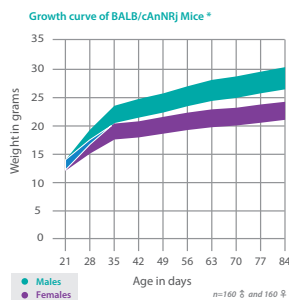
### Inbred mouse

Age (in weeks)

Price in Euros  
MALE or FEMALE



Technical sheet available  
on [www.janvier-labs.com](http://www.janvier-labs.com)



3	12,44
4	13,07
5	14,08
6	14,83
7	15,45
8	15,92
For each extra week	2,40
Time-mated pregnant female, guaranteed at E16 on delivery date	85,99
Not-guaranteed pregnant female	65,79
Female with litter (5-6 pups*)	91,57
Old breeders	12,32

## BALB/cJRj

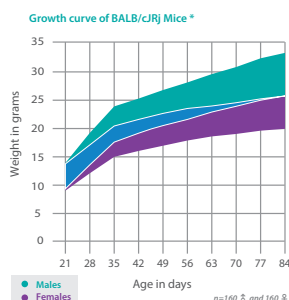
### Inbred mouse

Age (in weeks)

Price in Euros  
MALE or FEMALE



Technical sheet available  
on [www.janvier-labs.com](http://www.janvier-labs.com)



3	12,39
4	13,39
5	14,41
6	15,55
7	16,68
8	17,37
For each extra week	2,39
Time-mated pregnant female, guaranteed at E16 on delivery date	84,52
Not-guaranteed pregnant female	66,49
Female with litter (5-6 pups*)	90,00
Old breeders	12,39



\* as indicative basis.  
For animals with SOPF status; please contact us.



# RESEARCH MODELS

**DBA/1 DBA/1JRj**

**Inbred mouse**

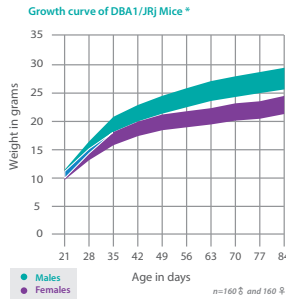
Age (in weeks)

Price in Euros

MALE or FEMALE



Technical sheet available on [www.janvier-labs.com](http://www.janvier-labs.com)



3	20,65
4	23,59
5	26,43
6	28,36
7	32,18
8	35,53
For each extra week	3,26
Time-mated pregnant female, guaranteed at E16 on delivery date	125,89
Not-guaranteed pregnant female	92,31
Female with litter (4-5 pups*)	137,63
Old breeders	17,56

**DBA/2 DBA/2JRj**

**Inbred mouse**

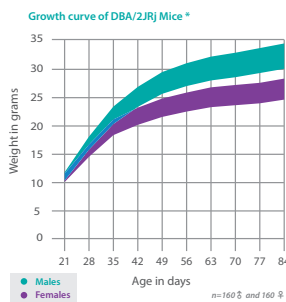
Age (in weeks)

Price in Euros

MALE or FEMALE



Technical sheet available on [www.janvier-labs.com](http://www.janvier-labs.com)



3	16,47
4	17,04
5	18,23
6	19,54
7	20,66
8	22,04
For each extra week	2,35
Time-mated pregnant female, guaranteed at E16 on delivery date	102,17
Not-guaranteed pregnant female	81,18
Female with litter (4-5 pups*)	106,31
Old breeders	14,54

**C3H C3H/HeNRj**

**Inbred mouse**

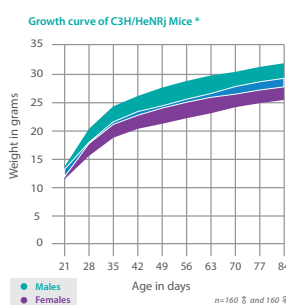
Age (in weeks)

Price in Euros

MALE or FEMALE



Technical sheet available on [www.janvier-labs.com](http://www.janvier-labs.com)



3	15,14
4	16,07
5	17,12
6	18,58
7	20,43
8	22,14
For each extra week	2,20
Time-mated pregnant female, guaranteed at E16 on delivery date	97,87
Not-guaranteed pregnant female	80,61
Female with litter (5-6 pups*)	107,04
Old breeders	14,16





# RESEARCH MODELS

**CBA CBA/JRj**

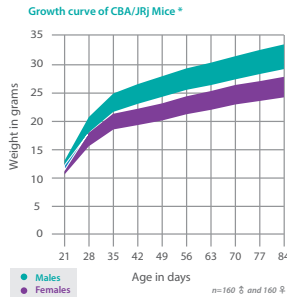
**Inbred mouse**

Age (in weeks)

Price in Euros  
MALE or FEMALE



Technical sheet available  
on [www.janvier-labs.com](http://www.janvier-labs.com)



3	14,87
4	15,48
5	16,83
6	19,33
7	20,64
8	23,16
For each extra week	2,41
Time-mated pregnant female, guaranteed at E16 on delivery date	94,40
Not-guaranteed pregnant female	65,08
Female with litter (5-6 pups*)	95,28
Old breeders	14,30

**FVB FVB/NRj**

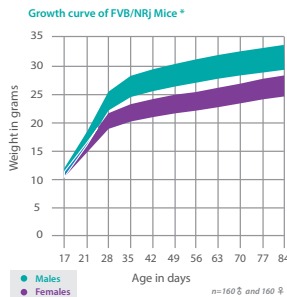
**Inbred mouse**

Age (in weeks)

Price in Euros  
MALE or FEMALE



Technical sheet available  
on [www.janvier-labs.com](http://www.janvier-labs.com)



3	12,47
4	13,29
5	15,53
6	16,24
7	18,96
8	19,69
For each extra week	2,39
Time-mated pregnant female, guaranteed at E16 on delivery date	88,25
Not-guaranteed pregnant female	71,96
Female with litter (5-6 pups*)	92,54
Old breeders	12,47

**SJL SJL/JRj**

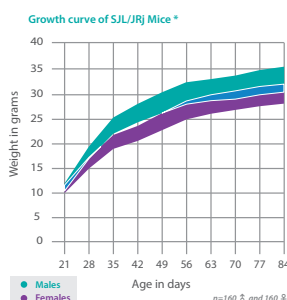
**Inbred mouse**

Age (in weeks)

Price in Euros  
MALE or FEMALE



Technical sheet available  
on [www.janvier-labs.com](http://www.janvier-labs.com)



3	21,16
4	22,14
5	24,61
6	27,23
7	29,67
8	32,24
For each extra week	2,62
Time-mated pregnant female, guaranteed at E16 on delivery date	120,97
Not-guaranteed pregnant female	96,28
Female with litter (5-6 pups*)	125,84
Old breeders	18,52



\* as indicative basis.  
For animals with SOPF status; please contact us.



# RESEARCH MODELS

129/Sv 12952/SvPasOrlRj

**Inbred mouse**

Age (in weeks)

Price in Euros

MALE or FEMALE

Technical sheet available  
on [www.janvier-labs.com](http://www.janvier-labs.com)

3	34,07
4	36,07
5	38,58
6	41,16
7	44,01
8	46,35
For each extra week	2,71
Old breeders	34,07



**NEW**

**B6 Agouti**  
**B6(C)Rj-A/A**

**Inbred mouse**

Technical sheet available  
on [www.janvier-labs.com](http://www.janvier-labs.com)

Price  
on request



**NEW**

**B6 Albino**  
**B6(C)Rj-Ty<sup>rc/c</sup>**

**Inbred mouse**

Technical sheet available  
on [www.janvier-labs.com](http://www.janvier-labs.com)

Price  
on request



**BP/2 BIOZZI**  
**BP/2IcRj-BIOZZI**

**Mutant mouse**

Technical sheet available  
on [www.janvier-labs.com](http://www.janvier-labs.com)

Price  
on request





# RESEARCH MODELS

## BALB/c-nu BALB/cAnNRj-Foxn1<sup>nu</sup>

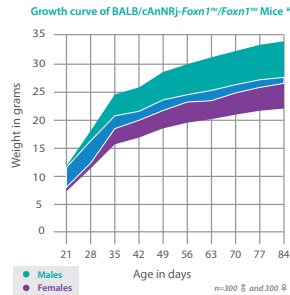
### Mutant mouse

Age (in weeks)

Price in Euros  
MALE or FEMALE



Technical sheet available  
on [www.janvier-labs.com](http://www.janvier-labs.com)



4	87,99
5	91,10
6	95,64
7	97,36
8	98,97
For each extra week	4,53

## NMRI-nu Rj:NMRI-Foxn1<sup>nu</sup>/Foxn1<sup>nu</sup>

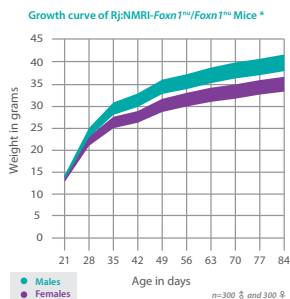
### Mutant mouse

Age (in weeks)

Price in Euros  
MALE or FEMALE



Technical sheet available  
on [www.janvier-labs.com](http://www.janvier-labs.com)



4	51,04
5	57,61
6	62,10
7	65,70
For each extra week (females)	3,94

## CB17-SCID CB-17/lcr-Prkdc<sup>scid</sup>/Rj

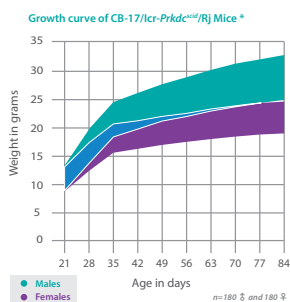
### Mutant mouse

Age (in weeks)

Price in Euros  
MALE or FEMALE



Technical sheet available  
on [www.janvier-labs.com](http://www.janvier-labs.com)



4	54,40
5	57,82
6	61,63
7	62,71
8	63,74
For each extra week	3,94

## NOD-SCID NOD.CB17/Alhnrj-Prkdc<sup>scid</sup>

### Mutant mouse

Age (in weeks)

Price in Euros  
MALE or FEMALE



Technical sheet available  
on [www.janvier-labs.com](http://www.janvier-labs.com)

4	93,41
5	95,54
6	97,51
7	105,41
8	106,26
For each extra week	4,37

\* as indicative basis.  
For animals with SOPF status: please contact us.



# RESEARCH MODELS

## OBESE B6.V-*Lep<sup>ob</sup>*/JRj

### Mutant mouse

Age (in weeks)

Price in Euros

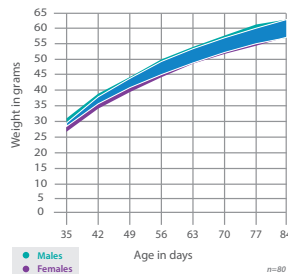
MALE or FEMALE

5	144,28
6	148,41
7	152,25
8	156,87

For each extra week 6,98

Technical sheet available on [www.janvier-labs.com](http://www.janvier-labs.com)

Growth curve of B6.V-*Lep<sup>ob</sup>*/JRj Mice \*



## OBESE Control B6.V-*Lep<sup>ob</sup>*/JRj Control

### Mutant mouse

Technical sheet available on [www.janvier-labs.com](http://www.janvier-labs.com)

Age (in weeks)	Price in Euros
	MALE
5	76,50
6	79,73
7	83,15
8	86,56
For each extra week	4,28



## DIABETIC BKS(D)-*Lep<sup>db</sup>*/JOrIRj

### Mutant mouse

Age (in weeks)

Price in Euros

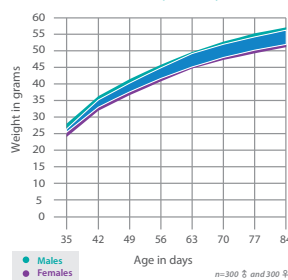
MALE or FEMALE

5	111,86
6	115,82
7	122,75
8	127,12

For each extra week 6,98

Technical sheet available on [www.janvier-labs.com](http://www.janvier-labs.com)

Growth curve of BKS(D)-*Lep<sup>db</sup>*/JOrIRj Mice \*



## DIABETIC Control BKS(D)-*Lep<sup>db</sup>*/JOrIRj Control

### Mutant mouse

Technical sheet available on [www.janvier-labs.com](http://www.janvier-labs.com)

Age (in weeks)	Price in Euros
	MALE
5	61,42
6	64,98
7	68,60
8	72,36
For each extra week	4,48







# RESEARCH MODELS

**B6D2F1 B6D2F1/JRj** (♀ C57BL/6JRj x ♂ DBA/2JRj)

**Hybrid mouse**

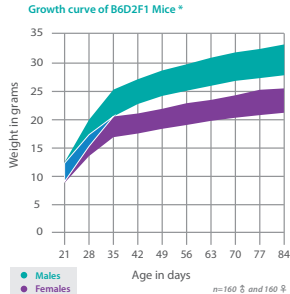
Age (in weeks)

Price in Euros

MALE or FEMALE



Technical sheet available on [www.janvier-labs.com](http://www.janvier-labs.com)



3	12,45
4	13,20
5	14,49
6	15,31
7	16,03
8	16,75
For each extra week	1,41
Old breeders	12,45

**B6CBAF1 B6CBAF1/JRj** (♀ C57BL/6JRj x ♂ CBA/JRj)

**Hybrid mouse**

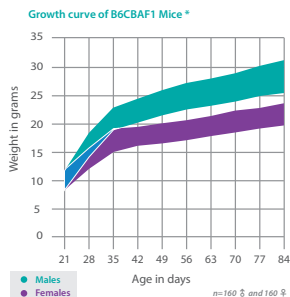
Age (in weeks)

Price in Euros

MALE or FEMALE



Technical sheet available on [www.janvier-labs.com](http://www.janvier-labs.com)



3	16,36
4	16,54
5	17,52
6	19,33
7	22,04
8	24,98
For each extra week	2,74
Old breeders	16,36

**B6SJLF1 B6SJLF1/JRj** (♀ C57BL/6JRj x ♂ SJL/JRj)

**Hybrid mouse**

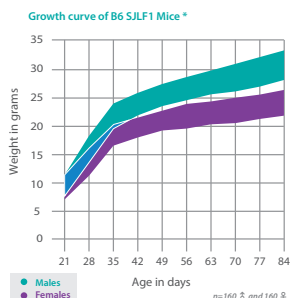
Age (in weeks)

Price in Euros

MALE or FEMALE



Technical sheet available on [www.janvier-labs.com](http://www.janvier-labs.com)



3	21,31
4	22,45
5	23,93
6	24,70
7	25,87
8	27,31
For each extra week	4,42
Old breeders	21,31

**CSJLF1 CSJLF1/JRj**  
(♀ BALB/cJRj x ♂ SJL/JRj)

**Hybrid mouse**

Technical sheet available on [www.janvier-labs.com](http://www.janvier-labs.com)

Price on request



**C3D2F1 C3D2F1/JRj**  
(♀ C3H/HeNRj x ♂ DBA/2JRj)

**Hybrid mouse**

Technical sheet available on [www.janvier-labs.com](http://www.janvier-labs.com)

Price on request





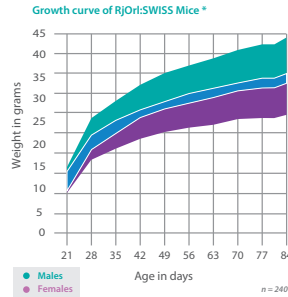
# RESEARCH MODELS

## SWISS RjOrl:SWISS (CD-1)

### Outbred mouse



Technical sheet available on [www.janvier-labs.com](http://www.janvier-labs.com)



Weight (in grams)	Price in Euros	
	MALE	FEMALE
10-12	4,35	4,35
12-14	4,56	4,56
14-16	4,77	4,77
16-18	4,97	4,97
18-20	5,18	5,18
20-22	5,43	5,43
22-24	5,69	5,69
24-26	5,94	5,94
26-28	6,23	6,23
28-30	6,57	6,57
30-32	6,92	6,92
32-34	7,26	7,26
34 +	On request	
Time-mated pregnant female, guaranteed at E15 on delivery date	45,02	
Not-guaranteed pregnant female	29,81	
Female with litter (10-12 pups*)	51,30	
Old breeders	4,00	

Price on request



## NMRI RjHan:NMRI

### Outbred mouse

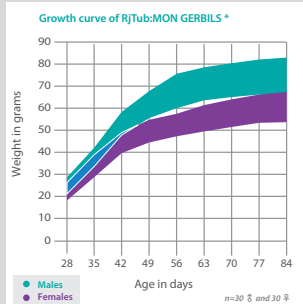
Technical sheet available on [www.janvier-labs.com](http://www.janvier-labs.com)

## GERBIL RjTub:MON

### Outbred gerbil



Technical sheet available on [www.janvier-labs.com](http://www.janvier-labs.com)



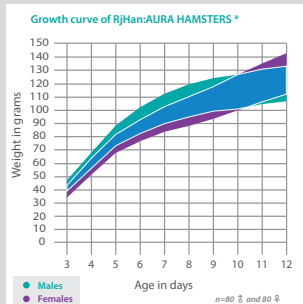
Weight (in grams)	Price in Euros	
	MALE	FEMALE
Up to 30	48,88	48,88
31 à 40	49,03	49,03
41 à 50	49,59	49,59
51 à 60	50,56	50,56
61 à 70	52,71	52,71
70 +	54,07	54,07
Pregnant female	187,24	
Female with litter	170,86	
Old breeders	48,88	

## GOLDHAMSTER RjHan:AURA

### Outbred hamster



Technical sheet available on [www.janvier-labs.com](http://www.janvier-labs.com)



Weight (in grams)	Price in Euros	
	MALE	FEMALE
40 to 49	28,58	28,58
50 to 59	31,15	31,15
60 to 79	36,54	36,54
80 to 99	42,04	42,04
100 to 119	47,27	47,27
For each extra week	6,17	
Pregnant female	113,72	
Female with litter	135,29	
Old breeders	28,58	

\* as indicative basis. For animals with SOPF status: please contact us.



## Secure your research

whilst saving resources through sperm cryopreservation of your mice with the JAX™ Sperm Cryo Kit\*



From  
**260 €<sup>1</sup>**  
**PER STRAIN**  
The Kit is available in  
3 strains  
6 strains  
9 strains



### The Kit is made up of 2 parts:

#### Media

- 3 ml vials, a vial is provided per strain
- in each Kit, an additional vial is included for training purposes

#### 25 straws are provided per strain in each Kit

- 20 for storage and 5 extra
  - 4 cassettes for permanent storage and transport which contain 5 straws each
- Straws and cassettes with unique identification numbers

### Cryopreservation of sperm:

- Enables you to **dramatically reduce costs** associated with mouse colony maintenance, particularly of low use strains
- **Protects your valuable mouse strains** against disease, breeding cessation and disaster
- **Protects your research by:**
  - limiting genetic drift
  - preventing the spontaneous loss of phenotype
  - enabling easy recovery of SOPF mice: no quarantine required upon arrival
  - facilitating strain transfer to collaborators

<sup>1</sup> Price valid for a 9-strain Kit

\* JANVIER LABS is the exclusive commercial provider of The Jackson Laboratory's JAX™ Sperm Cryo Kit in the following countries: Austria, Belgium, the Czech Republic, France, Germany, Hungary, Italy, Netherlands, Poland, Slovakia, Spain, Switzerland, Denmark, Finland, Norway, Sweden. JAX™ is a trademark of The Jackson Laboratory registered in the United States. All rights reserved.



## Reproductive sciences

Description		Objectives and details of the services
<b>Cryopreservation</b>		
<b>Sperm cryopreservation using the JAX™ Sperm Cryo Kit</b>		<i>Technical sheet available on <a href="http://www.janvier-labs.com">www.janvier-labs.com</a></i>
Sperm cryopreservation		20 straws (each contains 4 aliquots of 10 µl of sperm - ready for use)
<b>Embryo cryopreservation</b>		<i>Technical sheet available on <a href="http://www.janvier-labs.com">www.janvier-labs.com</a></i>
Your strain x JANVIER LABS' strain or your strain ♂ and ♀		250 frozen embryos or 150 to 200 frozen embryos of the strain
<b>Quality controls of cryopreserved sperm or embryos</b>		<i>Technical sheet available on <a href="http://www.janvier-labs.com">www.janvier-labs.com</a></i>
Cryopreserved sperm	<i>in vitro</i> <sup>2</sup> quality control	2-cell stage development rate after defrosting + <i>in vitro</i> fertilisation
	<i>in vivo</i> <sup>1,2</sup> quality control	Birth rate after implantation of embryos from QC1 into pseudopregnant females
Cryopreserved embryos	<i>in vitro</i> quality control	Viable embryo rate after defrosting and culture during 24 hours (from 2-cell stage to morula stage)
	<i>in vivo</i> <sup>1</sup> quality control	Birth rate after defrosting and reimplantation into pseudopregnant females
<b>Cryo-storage of straws</b>		<i>Technical sheet available on <a href="http://www.janvier-labs.com">www.janvier-labs.com</a></i>
Cryo-storage of frozen sperm straws <sup>2</sup>		Per year or long-time cryo-storage for 1 strain (up to 20 frozen sperm straws)
Cryo-storage of frozen embryos		Per year or long-time cryo-storage for 1 strain (up to 250 frozen embryos)

<b>Assisted reproduction</b>		
<b>Rederivation by embryo transfer</b>		<i>Technical sheet available on <a href="http://www.janvier-labs.com">www.janvier-labs.com</a></i>
Rapid rederivation	Your strain x JANVIER LABS' strain or your strain ♂ and ♀	Restitution of at least 2 visibly pregnant ♀
Complete rederivation	Your strain x JANVIER LABS' strain or your strain ♂ and ♀	Restitution of 3 to 6 SOPF males and 3 to 6 SOPF females
<b>Recovery of a strain<sup>3</sup> from cryopreserved sperm</b>		<i>Technical sheet available on <a href="http://www.janvier-labs.com">www.janvier-labs.com</a></i>
From cryopreserved sperm using the JAX™ Sperm Cryo Kit or other method		Restitution of at least 3 SOPF males and 3 SOPF females*
<b>Recovery of a strain from cryopreserved embryos</b>		<i>Technical sheet available on <a href="http://www.janvier-labs.com">www.janvier-labs.com</a></i>
From embryos cryopreserved by JANVIER LABS or by others		Restitution of at least 2 SOPF males and 2 SOPF females*
<b>Quick colony expansion by <i>in vitro</i> fertilisation</b>		<i>Technical sheet available on <a href="http://www.janvier-labs.com">www.janvier-labs.com</a></i>
<i>in vitro</i> fertilisation from fresh or cryopreserved sperm (quantity on request from 40 animals)		Restitution of the produced SOPF colony
<b>Strain rescue</b>		<i>Technical sheet available on <a href="http://www.janvier-labs.com">www.janvier-labs.com</a></i>
Strain rescue using the male	Mating test and <i>in vitro</i> fertilisation	Restitution of the produced SOPF animals
Strain rescue using the female	Mating test and ovarian transplant	Restitution of the produced SOPF animals
For any service of assisted reproduction, optional: identification and biopsy of pups born		

\* subject to the quality of the provided material in case of cryopreservation externally

JANVIER LABS is the exclusive commercial provider of The Jackson Laboratory's JAX™ Sperm Cryo Kit in the following countries: Austria, Belgium, the Czech Republic, France, Germany, Hungary, Italy, Netherlands, Poland, Slovakia, Spain, Switzerland, Denmark, Finland, Norway, Sweden. JAX™ is a trademark of The Jackson Laboratory registered in the United States. All rights reserved.

<sup>1</sup> Biopsies for genotyping if necessary

<sup>2</sup> This service can be performed by The Jackson Laboratory

<sup>3</sup> The Jackson Laboratory can recover your cryopreserved strains using JAX™ Mice host strains. Please contact JANVIER LABS for more details.



## Reproductive sciences

Description	Objectives and details of the services
<b>Embryos kits</b>	
<b>QUICKBLASTO®</b> (blastocysts for ES cell injection)	<i>Technical sheet available on <a href="http://www.janvier-labs.com">www.janvier-labs.com</a></i>
Small	10 straws containing 25 frozen embryos each
Large	40 straws containing 25 frozen embryos each
<b>Zygotes kit</b>	<b>NEW</b>
Small	10 straws containing 25 frozen zygotes each
Large	40 straws containing 25 frozen zygotes each
<b>2-cell kit</b>	<b>NEW</b>
Small	10 straws containing 25 frozen 2-cell stage embryos each
Large	40 straws containing 25 frozen 2-cell stage embryos each

QUICKBLASTO® is a registered trademark of JANVIER LABS. All rights reserved.

<b>Kit of sperm cryopreservation</b>	
<b>JAX™ Sperm Cryo Kit</b>	<i>Technical sheet available on <a href="http://www.janvier-labs.com">www.janvier-labs.com</a></i>
for 3 strains, for 6 strains and for 9 strains	

## Kits to facilitate your research

QUICKBLASTO®



Kit of frozen morulae to dispose of blastocysts easily to create chimeric mice through the injection of ES cells

JAX™  
Sperm Cryo Kit

by The Jackson laboratory



Kit of sperm cryopreservation  
Exclusively marketed in Europe<sup>1</sup> by JANVIER LABS

JAX™ is a trademark of The Jackson Laboratory registered in the United States. All rights reserved. <sup>1</sup>Europe includes Austria, Belgium, the Czech Republic, France, Germany, Hungary, Italy, Netherlands, Poland, Slovakia, Spain, Switzerland, Denmark, Finland, Norway, Sweden.

## Customised breeding

<b>Description</b>	
<b>Customised breeding</b>	<i>Technical sheet available on <a href="http://www.janvier-labs.com">www.janvier-labs.com</a></i>
STANDARD SERVICES - Mice / Rats - SPF <sup>4</sup> or SOPF <sup>4,5</sup>	OPTIONS
<ul style="list-style-type: none"> <li>Mating</li> <li>Weaning</li> <li>SOPF or SPF health monitoring controls</li> <li>Follow-up and scientific support of the project by a dedicated project manager</li> <li>Sending of a monthly follow-up report</li> <li>Dedicated customized breeding software (AniBio) (24/7) :               <ul style="list-style-type: none"> <li>Module ANIMALS</li> <li>Module BREEDINGS</li> <li>Module FINANCIAL MANAGEMENT</li> <li>Module SERVICES</li> </ul> </li> </ul>	<ul style="list-style-type: none"> <li>Electronic identification of the animals by transponder</li> <li>Biopsies</li> <li>Pregnancy follow-up</li> <li>Genotyping by PCR, establishment of a genotyping protocol</li> <li>Shipment of animals depending on needs (age, sex, genotype) based on predefined batches or according to availability</li> </ul>



<sup>4</sup> Free from all pathogens registered in the FELASA list

<sup>5</sup> Free from opportunists defined by JANVIER LABS



## Surgery

Services	Species and characteristics of the models	Price in Euros	
<b>Excision and ligature surgery</b>			
<i>Technical sheet available on <a href="http://www.janvier-labs.com">www.janvier-labs.com</a></i>			
Ovariectomy	From 4 weeks of age	On request	
Ovario-hysterectomy			
Hysterectomy			
Splenectomy			
Vasectomy			
Castration			
Adrenalectomy			
Thyroido-parathyroidectomy (rat)			
Bilateral diaphragmatic vagotomy (rat)			
70% hepatectomy (rat, mouse)			
Nephrectomy (unilateral or 5/6)			
Tubal ligation			
Ureter ligation (rat)			
Other types of ligation			
<b>Catheterisation</b>			
<i>Technical sheet available on <a href="http://www.janvier-labs.com">www.janvier-labs.com</a></i>			
<b>Non-vascular catheters:</b>			
Bile duct	Rats with a minimum weight of 200 g,	On request	
Stomach*, duodenum*, jejunum*, ileum*, colon*, intra-peritoneal* (injection)			
Bladder*			
<b>Vascular catheters:</b>			
Jugular vein	Pregnant female rats (from day 9-10),		
Femoral vein	Mice (jugular and non-vascular catheters on the digestive tract)		
Carotid artery			
Femoral artery			
Double vascular catheter			
Double vascular / non-vascular catheter			



\* infusion only

The weight of the animal required on the order form corresponds to the weight at the moment of the operation.

The price of the animal, the preparation before or after the operations and the treatments will be added to the price of the operation.

## Experimental protocols

Services (non-exhaustive list of protocols)	Species and characteristics of the models	Price in Euros
<b>Customised protocols and models</b>		
<i>Technical sheet available on <a href="http://www.janvier-labs.com">www.janvier-labs.com</a></i>		
<b>Examples of protocols:</b>		
DIO (Diet Induced Obesity) studies with different energy sources (lipids, carbohydrates, proteins...)	All species depending on the needs of the protocol and its feasibility	On request
Restricted diet studies		
Surgical protocol inducing diseases like osteoporosis by ovariectomy		
Inorganic or organic implant placement and subsequent monitoring including its evolution and its interaction with the animal		
<b>Pathological models</b>		
<i>Technical sheet available on <a href="http://www.janvier-labs.com">www.janvier-labs.com</a></i>		
<b>Examples of pathological experimental models:</b>		
Surgery model: jaundice model in rat, osteoporosis model in rat by ovariectomy of females	All species: rats, mice gerbils and hamsters	On request
Substance injection model: arthritis model by Freund adjuvant injection, model of type II diabetes by streptozotocin injection in rats and mice		
Diet-induced model: induced obesity by diet, hypercholesterolemia / atherosclerosis induced by high saturated fat and cholesterol diet, hypertriglyceridemia / insulin tolerance by high fructose / sucrose diet		



## Biological products

Products	Species and characteristics of the models	Price in Euros (per ml)		
		1 to 100 ml	101 to 250 ml	251 to 500 ml
<b>Blood products</b>				
<i>Technical sheet available on <a href="http://www.janvier-labs.com">www.janvier-labs.com</a></i>				
Whole blood	Outbred rat	On request		
	Inbred rat			
	Outbred mouse			
	Inbred mouse			
	Gerbil and hamster			
Plasma	Outbred rat			
	Inbred rat			
	Outbred mouse			
	Inbred mouse			
	Gerbil and hamster			
Serum	Outbred rat			
	Inbred rat			
	Outbred mouse			
	Inbred mouse			
	Gerbil and hamster			
Serum for embryo culture	Outbred rat			



The standard anti-coagulants are lithium heparin and EDTA K3. Bottled in 10 ml vials.  
For any other requests (anti-coagulants, packaging, strain, mutant models, age and sex determined), do not hesitate to contact us.

Products	Species and characteristics of the models	Price in Euros
<b>Organ sampling</b>		
<i>Technical sheet available on <a href="http://www.janvier-labs.com">www.janvier-labs.com</a></i>		
<b>Nervous system</b> Brain with or without the cerebellum, spinal cord	All species: rats, mice, gerbils and hamsters	On request
<b>Endocrine system</b> Adrenal glands, thyroid		
<b>Immune system</b> Thymus, spleen		
<b>Digestive system</b> Tongue, salivary glands, stomach, intestine (duodenum, jejunum, ileum), caecum, colon, liver, pancreas		
<b>Adipose tissue</b> Mesenteric adipose tissue, peri-gonadal adipose tissue, Perirenal adipose tissue, brown adipose tissue		
<b>Urogenital system</b> Kidneys, bladder, prostate, testes, seminal vesicle, ovaries, uterus		
<b>Cardiopulmonary system</b> Lungs, heart, aorta		
Other: skin, bones, muscle, eyes...		



Products	Species and characteristics of the models	Price in Euros
<b>Other biological materials</b>		
<i>Technical sheet available on <a href="http://www.janvier-labs.com">www.janvier-labs.com</a></i>		
Urine	All species: rats, mice, gerbils and hamsters	On request
Feces		
Milk (rat, mouse)		
Amniotic fluid		
Cerebrospinal fluid		
	Rats	





**JANVIER** <sup>®</sup>  
Rodent **research models** **LABS**  
& associated **services**

T. +33 (0)2 43 02 11 91  
F. +33 (0)2 43 02 00 15  
[contact@janvier-labs.com](mailto:contact@janvier-labs.com)

CS 4105 - Le Genest-Saint-Isle  
F-53941 Saint-Berthevin Cedex  
[janvier-labs.com](http://janvier-labs.com)